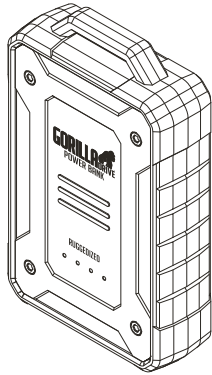


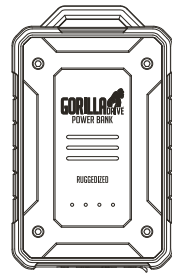
# GORILLADRIVE POWER BANK

## Quick Start Guide

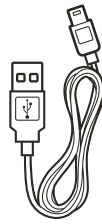


www.eppholdingsinc.com

### Unpack



Power Bank



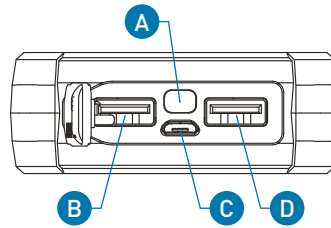
USB Charging Cable



Quick Start Guide

1

### Buttons & Ports

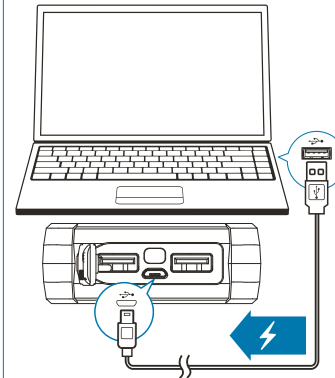


**A:** Power Button  
When the Power Button is pressed, the LED lights will display the amount of charge capacity available. It will also automatically proceed into hibernate model 10 seconds later and the LED lights will turn off.

**B:** USB Output 5V / 1A  
**C:** microUSB Input 5V / 2A  
**D:** USB Output 5V / 2.4A

2

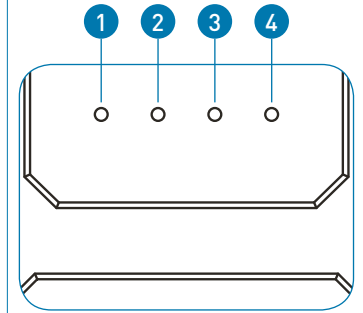
### Charging Power Bank



Connect the microUSB end of the provided cable into the Power Bank and the other end into the USB port on your computer. A USB to wall outlet adapter can also be used with the cable to charge the Power Bank, but is not provided.

3

### Power Bank LED Lights



The LED lights will display the amount of charge capacity available in the Power Bank.

**LED 1:** 0% - 25% Capacity  
**LED 2:** 25% - 50% Capacity  
**LED 3:** 50% - 75% Capacity  
**LED 4:** 75% - 100% Capacity

4

### Help & Warranty

**Help:**  
For more information and support on this product, please visit our website.

**Warranty:**  
This product is covered by a warranty for a period of one (1) year from the date of original purchase. For more information, please visit our website.

www.eppholdingsinc.com

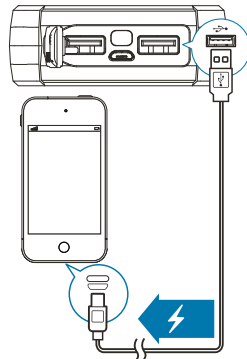


© 2016 EP Holdings, Inc.  
All registered logos and trademarks property of their respective owners.

iPad, iPhone, iPod are trademarks of Apple Inc., registered in the U.S. and other countries.

EP-GPB-QSG-4/2016-0

### Charging USB Devices



Check the input voltage on your device for compatibility with 5V / 1A or 5V 2.4A on the Power Bank.

Connect the USB end of the device provided cable into the Power Bank. Then connect the other end of the cable into your device. Your device will start charging automatically.

5

### Specifications

**Case Construction:**  
Rugged Double Injection Technique with Anti-shock TPU Material

**Capacity:**  
10400: 3.7v / 10400mAh  
7800: 3.7v / 7800mAh  
(Original LG Li-ion Battery Cells)

**Input Power:** DC 5V / 2A

**Input Ports:** 1 x Micro USB 2.0

**Output Power:** DC 5V / 2.4A & 1A

**Output Ports:** 2 x USB 2.0

**Dimension:**

10400: 5.15" x 3.15" x 1.02"

7800: 4.54" x 2.46" x 1.02"

**Charging Time:**

10400: 5 Hours\*

7800: 4 Hours\*

**Pass-Through Charging:**

Allows you simultaneously charge both the GorillaDrive Power Bank and your mobile device.

\*Charge times based on Power Bank being connected to a wall socket with an USB adapter output of 2.1A being used.

6

### Safety

- Do not dismantle the product.
- Do not put it into fire or water to avoid fire or possible explosion.
- Do not cover the product with material which may block cooling.
- Remove the cable immediately when the product is not used.
- Do not strike the product fiercely.
- Keep the product away from children.
- If product becomes swollen or a leak is found, stop use it and contact our customer service immediately.
- In any case of leakage, keep away from the liquid. Wash any skin contact area with large amount water immediately.
- Do not short circuit the product.
- Dispose the abandoned product appropriately according to the laws of your state.

7

### Notes

8